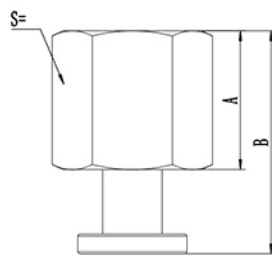
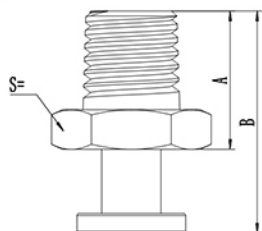




外形尺寸(mm)

· PPS连接螺钉



M:外螺纹

型号	A	B	S=	适配吸盘
ST3MJ-5	8	11.5	8	PJ(6-8)
ST3MF-5	8	11.5	8	PF(5-10)
ST3MJ1-01	14	19.5	14	PJ(15-25)
ST3MJ2-01	14	23	14	PJ(30-40)
ST3MJ3-01	14	23	14	PJ50
ST3MF1-01	14	23	14	PF15
ST3MF2-01	14	23	14	PF(20-40)
ST3MF3-01	14	23	14	PF50

F:内螺纹

型号	A	B	S=	适配吸盘
ST3FJ-5	8	11.5	8	PJ(6-8)
ST3FF-5	8	11.5	8	PF(5-10)
ST3FJ1-01	14	19.5	14	PJ(15-25)
ST3FJ2-01	14	23	14	PJ(30-40)
ST3FJ3-01	14	23	14	PJ50
ST3FF1-01	14	23	14	PF15
ST3FF2-01	14	23	14	PF(20-40)
ST3FF3-01	14	23	14	PF50